



HYUNDAI

MATERIAL HANDLING

REACH TRUCKS

- 16/20BRJ-9B
- 20BRJ-9BH

DISTRIBUTED BY:



AIRINDO SAKTI

www.airindosakti.co.id

16/20BRJ-9B

Lifting height up to 9,500mm
Comfortable driving and easy operation

Safe and reliable:

- The tilting of the fork can effectively improve the stability of the whole vehicle and the loading capacity at height.
- The electro-hydraulic proportional control system has good fretting performance, more stable work and more precise control.
- Speed limit function, when the forklift lifts to a certain height, the driving speed of the forklift will automatically decrease to ensure the safety of high position operation.
- The height limit function, the lifting motor will automatically power off to ensure the safety of lifting when the forks lift to the maximum height.
- Turning speed limit control prevents the truck from tipping sideways when turning, ensuring the safety of the truck when turning.
- Smooth deceleration when the mast reaches/backwards to the end can ensure the stability of the mast movement.
- The combination of electromagnetic and hydraulic brakes provides a short braking distance, no deviation, no impact, and ensures safety and reliability.
- The parking electromagnetic brake can realize the one-key start operation function no matter it is on the slope or on the smooth ground.
- Using CAN bus communication technology, electrical wiring is simple, the compatibility is good, and the reliability is high.
- AC frequency conversion speed control technology enables stepless closed-loop speed control of driving, lifting, and steering drives. It is accurate and reliable.

Energy efficient:

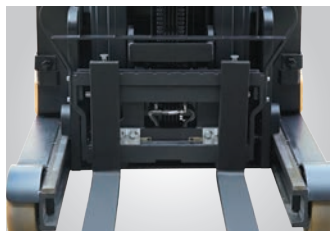
- It adopts AC drive motor, hydraulic pump motor and steering motor, with long service life, maintenance-free and reliable performance.
- Regenerative braking to achieve energy recovery and extend battery life.
- All lights use LED, durable and energy-saving.

Standard & Option

● : Standard, ○ : Option

Description		16BRJ-9B	20BRJ-9B
Seat	Qinglin seat	●	●
	Grammer seat	○	○
Fork	Length - 1,150mm	●	●
	Length - 1,150mm ~ 1,520mm	○	○
Attachement	Integral side shift	○	○
Tires	Polyurethane (PU)	●	●
Lamp	Work lamp, Combi lamp	●	●
Camera	Camera & Display	○	○
Convenience	Load weight indicator	○	○
	Height preselection system	○	○
	Side extraction battery	○	○
Performance	High performance - Travel & Lift speed	○	○
Safety	LED Beacon lamp	●	●

Robust design & Excellent stability



The powerful chassis structure and reasonable center of mass distribution make the forklift have excellent stability.



The large arc of the back wall of the chassis coincides with the turning radius of the vehicle, which is beautiful and has a small turning radius.



The high-precision forward sliding rail and excellent clearance compensation design make the forward movement of the masts more stable.

Optional function



Side battery extraction



HD video camera



Electronic height preselected system



Integrated side-shift



Comfortable driving & Easy operation



The low-noise gear hydraulic pump reduces the lifting noise of the entire vehicle. Controllers for the motors are from internationally renowned brands, offering self-protection, maintenance-free operation, and exceptional performance.



Multi-function color LCD instrument can display information such as steering wheel position, power alarm, fault code, running time etc. The driving speeds of low, medium and high third gear can be set through the cluster.



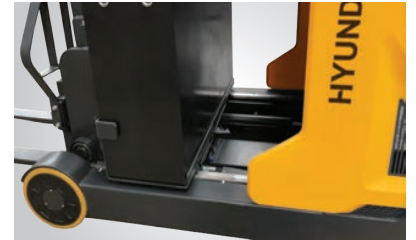
The spacious driving space and ergonomic layout reflect the humanized design of the vehicle.



Shock-absorbing seat, adjustable backrest, and seat belt as standard.



In order to replace the battery it's tray should be reached forwards. The lever for battery's tray release is located near with operator's foot.



Adopting AC EPS electronic power steering system, the steering is light and has automatic centering function, and the 180°/360° steering mode can be switched in real time.



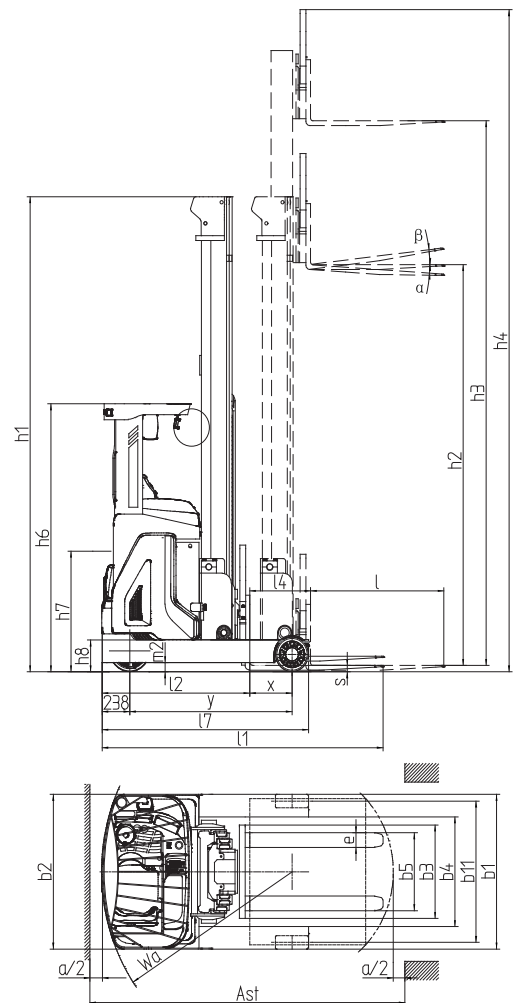
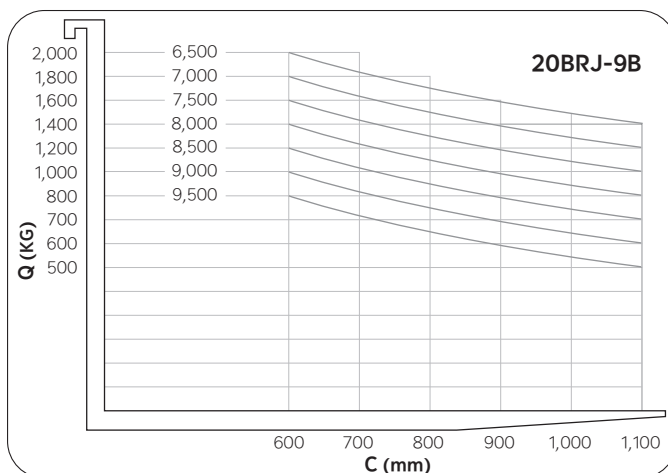
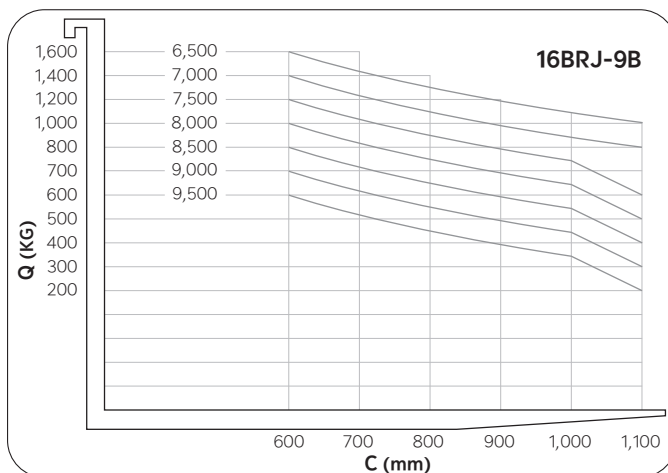
The steering wheel and central control console can be adjusted freely in all directions to suit your best operating habits.





Type sheet for industrial truck acc. to VDI 2198

Model	Lift height h3 (mm)	Free lift h2 (mm)	Mast height h1 (mm)	Load capacity (kg)	Tilt of fork α/β (°)
16M450	4,500	1,563	2,235	1,600	4° / -2°
16M500	5,000	1,730	2,400	1,600	4° / -2°
16M550	5,500	1,897	2,568	1,600	4° / -2°
16M600	6,000	2,063	2,735	1,600	4° / -2°
16M650	6,500	2,230	2,900	1,600	4° / -2°
16M700	7,000	2,397	3,068	1,400	4° / -2°
16M750	7,500	2,563	3,234	1,200	4° / -2°
16M800	8,000	2,730	3,400	1,000	4° / -2°
16M850	8,500	2,897	3,567	800	4° / -2°
16M900	9,000	3,063	3,734	700	4° / -2°
16M950	9,500	3,230	3,900	600	4° / -2°
20M450	4,500	1,563	2,235	2,000	4° / -2°
20M500	5,000	1,730	2,400	2,000	4° / -2°
20M550	5,500	1,897	2,568	2,000	4° / -2°
20M600	6,000	2,063	2,735	2,000	4° / -2°
20M650	6,500	2,230	2,900	2,000	4° / -2°
20M700	7,000	2,397	3,068	1,800	4° / -2°
20M750	7,500	2,563	3,234	1,600	4° / -2°
20M800	8,000	2,730	3,400	1,400	4° / -2°
20M850	8,500	2,897	3,567	1,200	4° / -2°
20M900	9,000	3,063	3,734	1,000	4° / -2°
20M950	9,500	3,230	3,900	800	4° / -2°



Type sheet for industrial truck acc. to VDI 2198

Identification

1.2	Manufacturer's type designation		16BRJ-9B	20BRJ-9B
1.3	Drive		Electric	Electric
1.4	Operator type		Seated	Seated
1.5	Load capacity / rated load	Q (kg)	1,600	2,000
1.6	Load centre distance	c (mm)	600	600
1.8	Load distance, centre of drive axle to fork	x (mm)	365	395
1.9	Wheelbase	y (mm)	1,400	1,500

Weights

2.1	Service weight	kg	3,960	4,220
2.3	Axle loading, unloaded front / rear	kg	2,420/1,540	2,560/1,660

Wheels, Chassis

3.1	Tires		Polyurethane (PU)	Polyurethane (PU)
3.2	Tire size, front	Øx w (mm)	Ø343 × 140	Ø343 × 140
3.3	Tire size, rear	Øx w (mm)	Ø285 × 110	Ø330 × 110
3.5	Wheels, number front / rear (x=driven wheels)		1x / 2	1x / 2
3.7	Tread, rear	b11 (mm)	1,160	1,160

Basic dimensions

4.1	Mast / fork carriage tilt forward / backward	α/β (°)	4° / -2°	4° / -2°
4.2	Lowered mast height	h1 (mm)	3,900	3,900
4.3	Free lift height	h2 (mm)	3,290	3,290
4.4	Lift height	h3 (mm)	9,500	9,500
4.5	Extended maximal height	h4 (mm)	10,410	10,410
4.7	Overhead load guard height	h6 (mm)	2,200	2,200
4.8	Seat height	h7 (mm)	960	960
4.10	Height of support arms	h8 (mm)	270	270
4.15	Height of lowerd forks	h13 (mm)	40	40
4.19	Overall length	l1 (mm)	2,412	2,488
4.20	Length to face of forks	l2 (mm)	1,273	1,338
4.21	Overall width	b1 (mm)	1,270	1,270
4.22	Fork dimensions	s/e/l (mm)	35 / 100 / 1,150	40 / 120 / 1,150
4.23	Fork carriage ISO 2328, class / type A,B		2A	2A
4.25	Overall forks width	b5 (mm)	200-740 / 200-818	240-740 / 240-818
4.26	Distance between support arms	b4 (mm)	900	900
4.28	Reach stroke	l4 (mm)	525	595
4.31	Ground clearance, laden, under mast	m1 (mm)	90	90
4.32	Ground clearance, centre of wheelbase	m2 (mm)	75	75
4.33	Aisle width for pallets 1,000 X 1,200 crossways	Ast (mm)	2,720	2,840
4.34	Aisle width for pallets 800 X 1,200 lengthways	Ast (mm)	2,780	2,900
4.35	Turning radius	Wa (mm)	1,650	1,750
4.37	Length across support arms	l7 (mm)	1,780	1,900

Performance data

5.1	Travel speed, laden / unladen	km/h	10.5 / 10.5	10.5 / 10.5
5.2	Lift speed, laden / unladen	m/s	0.35 / 0.50	0.35 / 0.5
5.3	Lowering speed, laden / unladen	m/s	0.45 / 0.45	0.45 / 0.45
5.4	Reach speed, laden / unladen	m/s	0.10 / 0.10	0.10 / 0.10
5.8	Max. gradeability, laden / unladen	%	10 / 15	10 / 15
5.10	Service brake		Hydraulic / Electric	Hydraulic / Electric

E-Motor

6.1	Drive motor rating S2 60min	kW	6	6
6.2	Lift motor rating at S3 10%	kW	13	13
6.4	Battery voltage, nominal capacity K5	V / Ah	48 / 420	48 / 560
6.5	Battery weight	kg	750	950

Other details

8.1	Type of drive control		Three-phase AC	Three-phase AC
8.4	Sound level at driver's ear acc. to EN 12053	dB(A)	<70	<70

20BRJ-9BH

Sit-on reach truck with capacity 2,000kg
lifting height up to 12,500mm

Safe and reliable:

- The tilting of the fork can effectively improve the stability of the whole vehicle and the loading capacity at height.
- The electro-hydraulic proportional control system has good fretting performance, more stable work and more precise control.
- Speed limit function, when the forklift lifts to a certain height, the driving speed of the forklift will automatically decrease to ensure the safety of high position operation.
- The height limit function, the lifting motor will automatically power off to ensure the safety of lifting when the forks lift to the maximum height.
- Turning speed limit control prevents the truck from tipping sideways when turning, ensuring the safety of the truck when turning.
- Smooth deceleration when the mast reaches/backwards to the end can ensure the stability of the mast movement.
- The combination of electromagnetic and hydraulic brakes provides a short braking distance, no deviation, no impact, and ensures safety and reliability.
- The parking electromagnetic brake can realize the one-key start operation function no matter it is on the slope or on the smooth ground.
- Using CAN bus communication technology, electrical wiring is simple, the compatibility is good, and the reliability is high.
- AC frequency conversion speed control technology enables stepless closed-loop speed control of driving, lifting, and steering drives. It is accurate and reliable.

Energy efficient:

- It adopts AC drive motor, hydraulic pump motor and steering motor, with long service life, maintenance-free and reliable performance.
- Regenerative braking to achieve energy recovery and extend battery life.
- All lights use LED, durable and energy-saving.

● : Standard, ○ : Option

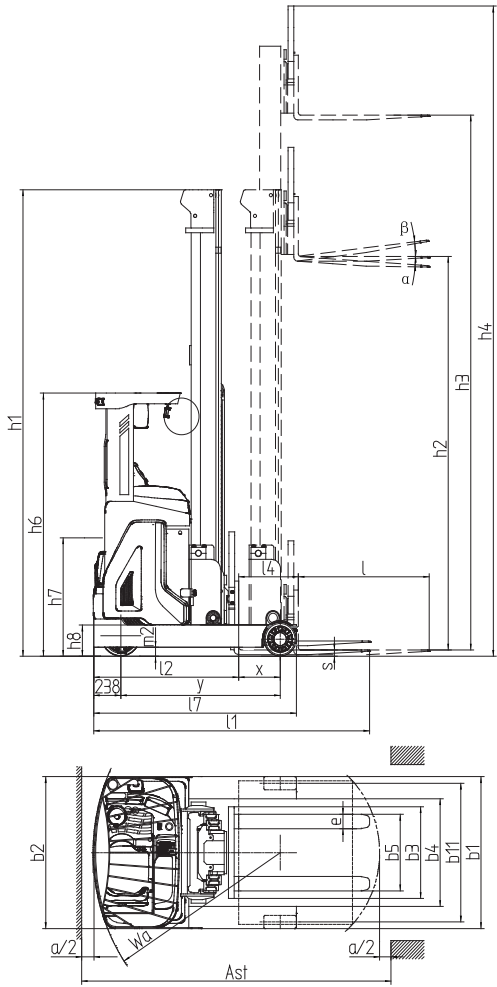
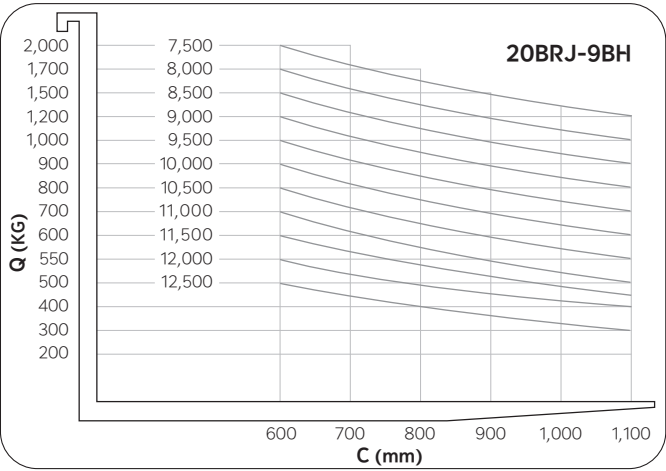
Description		20BRJ-9BH
Seat	Qinglin seat	●
	Grammer seat	○
Fork	Length - 1,150mm	●
	Length - 1,150 ~ 1,520mm	○
Attachment	Integral side shift	○
Tires	Polyurethane (PU)	●
Lamp	Work lamp, Combi lamp	●
Camera	Camera & Display	○
Convenience	Load weight indicator	○
	Height preselection system	○
	Side extraction battery	○
Performance	High performance - Travel & Lift speed	○
Safety	LED Beacon lamp	●





Type sheet for industrial truck acc. to VDI 2198

Model	Lift height h3 (mm)	Free lift h2 (mm)	Mast height h1 (mm)	Load capacity (kg)	Tilt of fork α/β (°)
20M1000	10,000	3,397	4,067	900	4° / -2°
20M1050	10,500	3,563	4,234	800	4° / -2°
20M1100	11,000	3,730	4,400	700	4° / -2°
20M1150	11,500	3,897	4,567	600	4° / -2°
20M1200	12,000	4,063	4,733	550	4° / -2°
20M1250	12,500	4,230	4,900	500	4° / -2°
20M1350	13,500	4,563	5,233	500	4° / -2°



Type sheet for industrial truck acc. to VDI 2198

Identification

1.2	Manufacturer's type designation		20BRJ-9BH
1.3	Drive		Electric
1.4	Operator type		Seated
1.5	Load capacity / rated load	Q (kg)	2,000
1.6	Load centre distance	c (mm)	600
1.8	Load distance, centre of drive axle to fork	x (mm)	405
1.9	Wheelbase	y (mm)	1,590

Weights

2.1	Service weight	kg	5,200
-----	----------------	----	-------

Wheels, Chassis

3.1	Tires		Polyurethane (PU)
3.2	Tire size, front	Øx w (mm)	Ø406 × 152
3.3	Tire size, rear	Øx w (mm)	Ø330 × 140
3.5	Wheels, number front / rear (x=driven wheels)		1 x / 2
3.7	Tread, rear	b11 (mm)	1,290

Basic dimensions

4.1	Mast / fork carriage tilt forward / backward	α/β (°)	4° / -2°
4.2	Lowered mast height	h1 (mm)	4,900
4.3	Free lift height	h2 (mm)	4,290
4.4	Lift height	h3 (mm)	12,500
4.5	Extended maximal height	h4 (mm)	13,410
4.7	Overhead load guard height	h6 (mm)	2,200
4.8	Seat height	h7 (mm)	1,100
4.10	Height of support arms	h8 (mm)	270
4.15	Height of lowered forks	h13 (mm)	40
4.19	Overall length	l1 (mm)	2,580
4.20	Length to face of forks	l2 (mm)	1,430
4.21	Overall width	b1/b2 (mm)	1,430 / 1,270
4.22	Fork dimensions	s/e/l (mm)	40 / 120 / 1,150
4.23	Fork carriage ISO 2328, class / type A,B		2A
4.25	Overall forks width	b5 (mm)	200-740
4.26	Distance between support arms	b4 (mm)	1,000
4.28	Reach stroke	l4 (mm)	640
4.31	Ground clearance, laden, under mast	m1 (mm)	90
4.32	Ground clearance, centre of wheelbase	m2 (mm)	75
4.33	Aisle width for pallets 1,000 X 1,200 crossways	Ast (mm)	2,880
4.34	Aisle width for pallets 800 X 1,200 lengthways	Ast (mm)	2,975
4.35	Turning radius	Wa (mm)	1,840
4.37	Length across support arms	l7 (mm)	2,000

Performance data

5.1	Travel speed, laden / unladen	km/h	10 / 11
5.2	Lift speed, laden / unladen	m/s	0.35 / 0.50
5.3	Lowering speed, laden / unladen	m/s	0.45 / 0.45
5.4	Reach speed, laden / unladen	m/s	0.10 / 0.10
5.8	Max. gradeability, laden / unladen	%	10 / 10
5.10	Service brake		Hydraulic / Electric

E-Motor

6.1	Drive motor rating S2 60min	kW	7
6.2	Lift motor rating at S3 10%	kW	13
6.4	Battery voltage, nominal capacity K5	V / Ah	48 / 700
6.5	Battery weight	kg	1,150

Other details

8.1	Type of drive control		Three-phase AC
8.4	Sound level at driver's ear acc. to EN 12053	dB (A)	68

You can visit
the HD Hyundai XiteSolution
website by scanning
the QR code



Authorized Dealer



AIRINDO SAKTI

www.airindosakti.co.id



*Details may vary depending on sales market and body type.
Photos, specifications, features and equipment shown
in this publication are based upon the latest available information.
Copyright © HD Hyundai XiteSolution Company. All Rights Reserved.

<https://www.hd-xitesolution.com/>