



Company

For 60 years PVR has been a leader providing high quality and reliable vacuum pumps. PVR means primarily trusted and advanced technologies, but also sustainable development for the stakeholders, environmental protection and focus on energy saving. The experience acquired during these years of activities, allows PVR to offer products and services that are always reliable and innovative.



sevencom.it



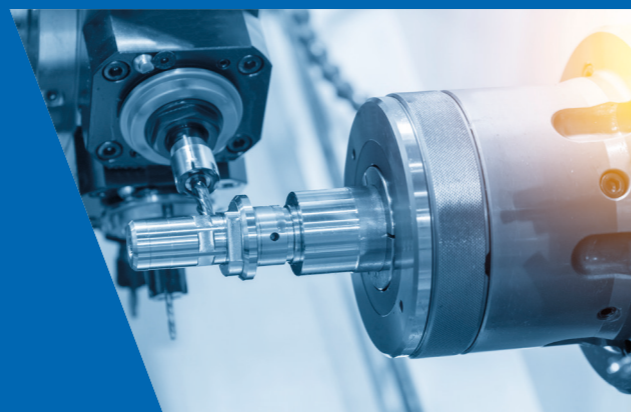
Provide trusted & advanced technologies



Machining Division

With a view to verticalization of its processes and increased capacity to provide more services to customers, PVR has had a specialized Machining Division for brass, steel, cast iron, stainless steel, and aluminum components since 2023.

Professionalism, experience, and quality characterise PVR Machining Division in the machining of numerous parts for vacuum pumps and components in the industrial, automotive, petrochemical, hydraulic, and electrical sectors.



Service

PVR guarantees a qualified advice for every inquiry thanks to its skilled technical/sales office that supports every project. The Service Department assists and advises our customers with scheduled maintenance, qualified overhauls and spare parts ready for delivery.



PVR Srl

HEADQUARTERS:

Via Santa Vecchia, 107 - 23868 Valmadrera (LC), Italy

+39 0341 1918 51

sales@pvr.it

www.pvr.it

SERVICE:

+39 339 1495 976

service@pvr.it

LOCAL UNIT:

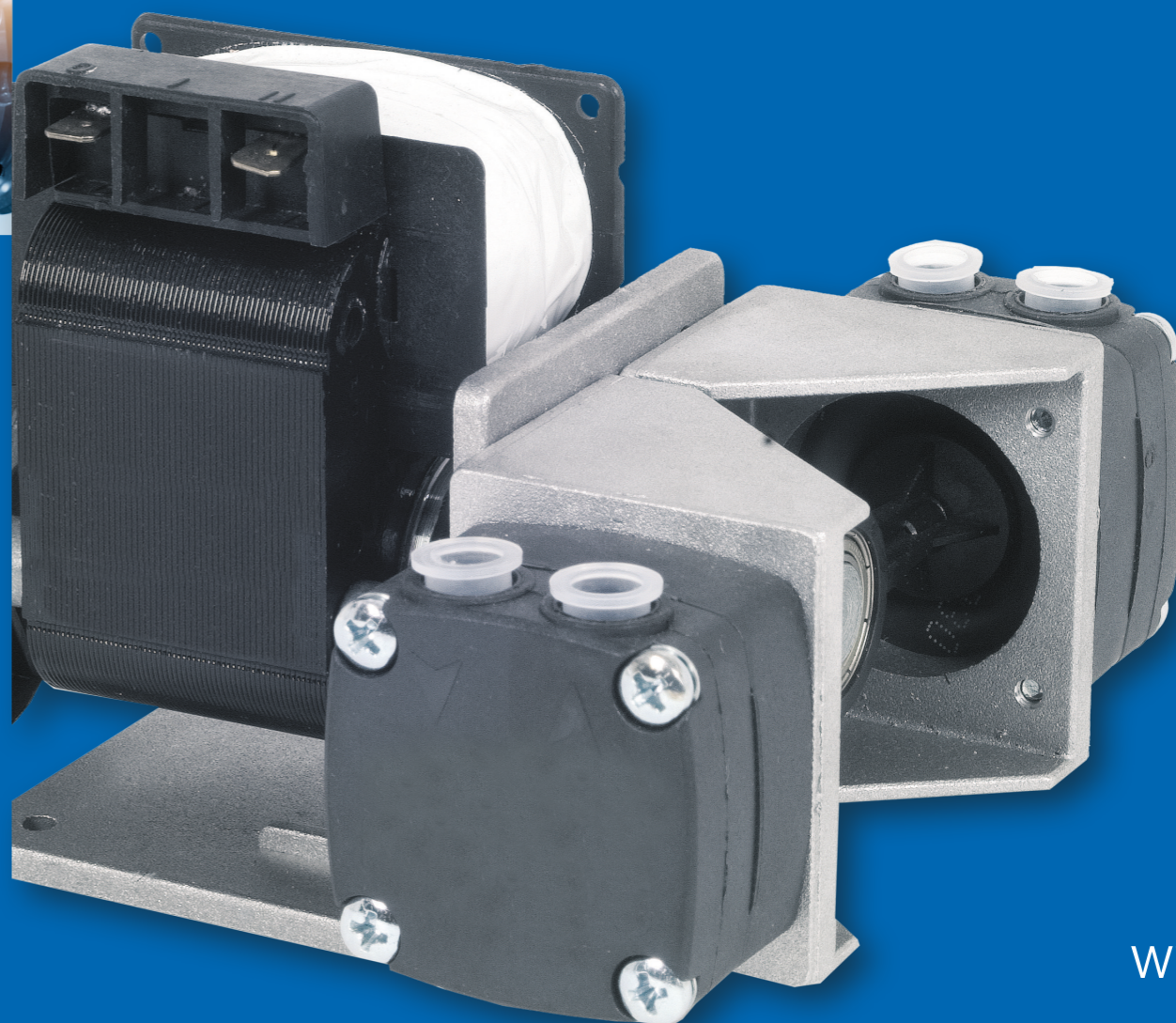
Via IV Novembre, 104F
23868 Valmadrera (LC), Italy

MACHINING DIVISION:

Via Grandi, 12 Loc. Malpensata
26866 Sant'Angelo Lodigiano (LO), Italy



042401-EN



Diaphragm Vacuum Pumps and compressors **M** Series

 www.pvr.it

M Series

Diaphragm vacuum pumps and compressors

Diaphragm pumps of “M41 and M71 Series” are completely oil free. They can be used either to create vacuum or pressure. The “M41 Series” has a Ryton®-made pump body, the diaphragm and the gasket VITON, EPDM or PTFE. The “M71 Series” has the pump body made of galvanized anticorodal aluminium, the diaphragms and the gaskets can be made of EPDM or VITON. All the pumps are available either with single or double-head to be used either in parallel or in series. The “M41 Series” can also be supplied with three or four heads to increase the capacity.



Designed to offer the customer numerous benefits

- Dry diaphragm technology
- Compact and low weight
- Versatile for various applications with the possibility to choose diaphragms of different materials
- Reduced maintenance

Applications

Packaging machines with modified atmosphere
Blister packaging machines
Bottle fillings
Chemical processes
Degassing materials
Solvent recovery systems
Distillation systems

Pick & place systems
Dental equipments
Cosmetic industries
Laboratories
Ozone generators
Gas analysers

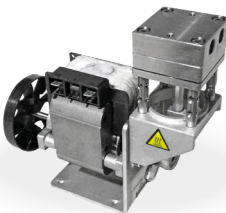
Special series HT with body and valve made of AISI 316. temperature of the pumped medium up to 200°C.

		M41S AC04 HT		M41S AC04**		M41S DC52	M71S AC05		M71S DC54
		50 Hz		50 Hz	60 Hz		50 Hz	60 Hz	
Nominal capacity	l/min	7		8	9,5	8	30	36	30
Max. relative pressure	bar(g)	2		2		2,5	0,7		0,7
Max. vacuum	mbar(a)	180		200		200	100		100
Voltage	V	AC	230	230	110-230	-	230	110-230	-
		DC	-	-	-	12 24	-	-	12 - 24
Motor power	W	60		60	72	6	95	110	30
Weight	kg	1,8		1,4		0,6	2,1		1,9

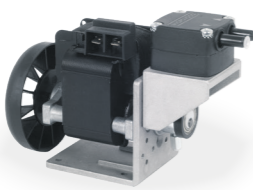
		M41BX AC04		M41BX DC53	M71BX AC08			M71BX DC55	
		50 Hz	60 Hz		50Hz 1 ~	60Hz 1 ~	50Hz 3 ~		
Nominal capacity	l/min	Series	8	8,5	33	39	33	33	
		Parallel	16	17	62	72	62	62	
Max. relative pressure	bar(g)	Series	3	3	1,8			1,8	
		Parallel	2	2	0,8			0,8	
Max. vacuum	mbar(a)	Series	40(60*)	40 (60*)	15			15	
		Parallel	200(230*)	200 (230*)	100			100	
Voltage	V	AC	230	110-230	230	110-230	230-400	-	-
		DC	-	-	12	24	-	12	24
Motor power	W	60	72	22	140	160	140	60	
Weight	kg	1,6	1,2	3,2	3,1	3,1	3,1	2,7	

* Combined version vacuum and pressure

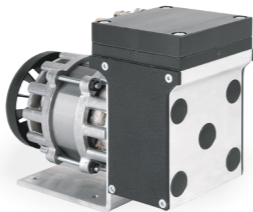
** Available in EMMEBOX version too



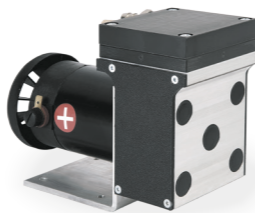
M41S AC04 HT



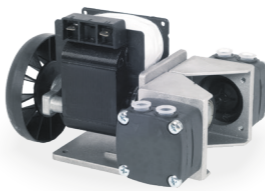
M41S AC04



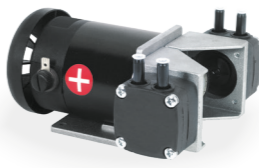
M71S AC05



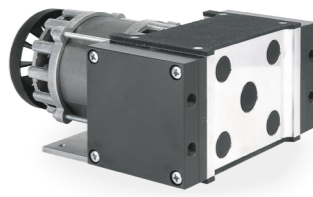
M71S DC54



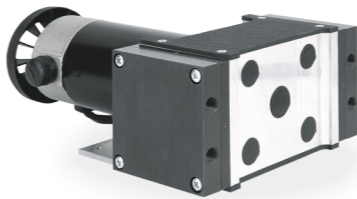
M41BX AC04



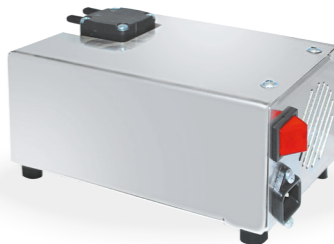
M41BX DC53



M71BX AC08



M71BX DC55



EMMEBOX

