

HYDRAULIC BREAKER TR-F SERIES

SOOSAN
CEBOTICS

**Fewer Components,
Less Maintenance**

✓ Integrated Power Control ✓ Anti Blank Hammering System
(SB147/157/200 Only)

✓ KEY BENEFITS

- High Power to Weight Ratio
- IPC&ABH System Allows You to Choose 3 Different Working Modes
- Proven Design for Performance
- Powerful Impact Force with Less Oil Flow and Pressure
- HARDOX Housing for High Durability

SOOSAN

Pride of SOOSAN

Worldwide acceptance for its proven design
and reliable performance

ABOUT SOOSAN

As one of largest manufacturers of hydraulic breaker, SOOSAN CEBOTICS Co., Ltd., has been committed to the development and manufacturing of quality products and product support since its establishment in 1984.

Since the first hydraulic breaker rolled out in 1984, the ingenious and patented design of SOOSAN hydraulic breakers have received recognitions for its superb performance from worldwide customers.

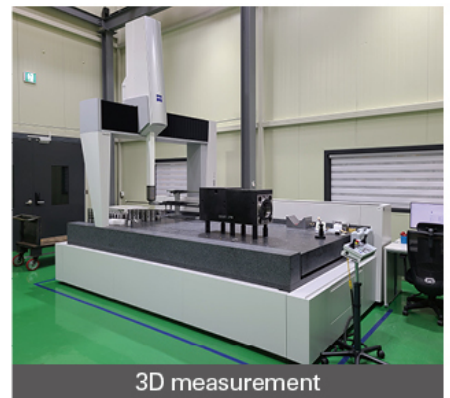
- State-of-the-art manufacturing processes and following best practices in material sourcing, machining, heat treatment, assembly, and final testing yields products of unsurpassed quality and durability.
- Global market leader recognized as a performance innovator in efficient product design and field-proven dependability.



Vertical Grinding



Robot Welding Automation



3D measurement



High efficiency

High performance

Less weight

Simple structure

Features & Benefits ;

Proven design for performance and reliability

SB hydraulic breakers have the most efficient and simple structure with its commitment to the basics. SB hydraulic breakers have gained worldwide acceptance in the past four decades and its breaker design is a subject of benchmarking around the world.

High power to weight ratio

Due to high quality materials and advanced technology, higher percussive performance to weight ratio is guaranteed.

Fewer components, less maintenance

Simple structure of TR-F series enables maintenance cost to be reduced.

Improved vibration dampening

Fully isolated power cell with premium quality urethane cushions and wear plates absorb shock and vibration resulting in reduced wear.

Gas and oil percussion mechanism

Compressed nitrogen gas in the back head greatly contributes to powerful impact force with less oil flow and pressure.

HARDOX reinforced housing

The lower part of housing is reinforced by HARDOX for maximum durability.

Facilities and quality control with SOOSAN know-how and experience

All component machining and final grinding are conducted on the latest precision SPC equipment, and carefully monitored for precise tolerances. In the assembly process, only the latest generation robot welding machines are used.

IPC & ABH system(SB147, SB157, SB200TR-F Only)

Integrated Power Control and Anti-Blank Hammering system allows operator to choose three different working mode. The automatic Anti-Blank Hammering function (shut-off) can be switched on or off.



TR-F Line-up



SB50 TR-F



SB60 TR-F



SB70 TR-F



SB81 TR-F



SB100 TR-F

Specifications

Description	Unit	SB50TR-F	SB60 TR-F	SB70 TR-F	SB81TR-F	SB100 TR-F
Operating weight	kg	973	1330	1544	1830	2258
Carrier weight	ton	11 ~ 16	15 ~ 18	16 ~ 21	18 ~ 26	25 ~ 35
Height	mm	2334	2592	2682	2813	3063
Required oil flow	ℓ / min	80 ~ 110	90 ~ 120	100 ~ 150	120 ~ 180	150 ~ 210
Operating pressure	bar	150 ~ 170	150 ~ 170	160 ~ 180	160 ~ 180	160 ~ 180
Impact rate	bpm	350 ~ 700	350 ~ 650	350 ~ 600	350 ~ 500	300 ~ 450
Chisel diameter	mm	100	125	135	140	150

※ The above specifications are subject to change without prior notice.



SB125 TR-F

SB130 TR-F

SB147 TR-F

SB157 TR-F

SB177 TR-F

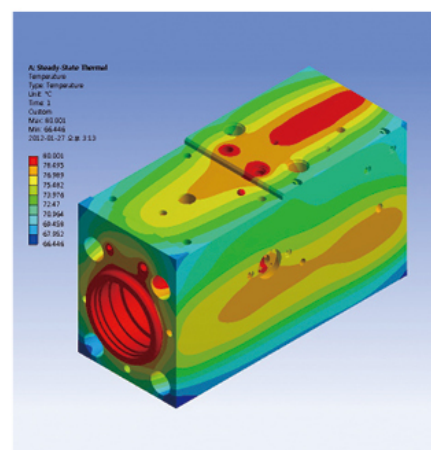
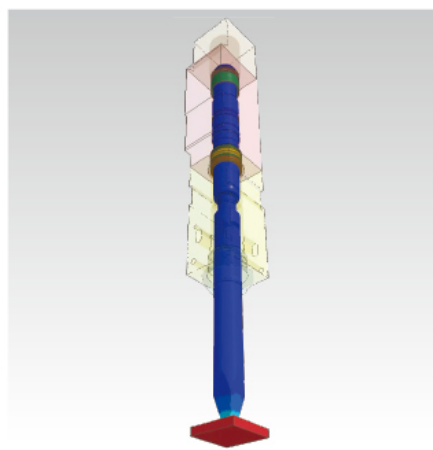
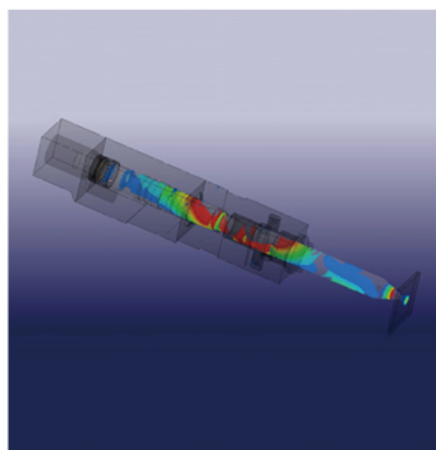
SB200 TR-F

SB125 TR-F	SB130 TR-F	SB147 TR-F	SB157 TR-F	SB177 TR-F	SB200 TR-F
2781	2996	3314	4108	5273	7836
28 ~ 38	30 ~ 45	33 ~ 48	40 ~ 55	45 ~ 70	70 ~ 120
3215	3392	3605.5	3786	4278	4355
180 ~ 240	200 ~ 260	200 ~ 260	210 ~ 290	250 ~ 390	400 ~ 500
160 ~ 180	160 ~ 180	160 ~ 180	160 ~ 190	170 ~ 190	170 ~ 190
300 ~ 450	250 ~ 400	[H Mode] 250 ~ 350 [L Mode] 300 ~ 450	[H Mode] 150 ~ 250 [L Mode] 300 ~ 340	150 ~ 250	[H Mode] 200 ~ 300 [L Mode] 300 ~ 400
155	165	165	175	190	210



Impact Power Mechanism 3D Analysis

Keeping dynamical stability through optimum design using 3D Software and computer System structural analysis 40 years of accumulated experiences and market feedback were implemented in the design.






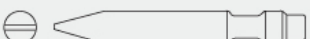

Application ;

- Primary and secondary breaking in quarries
- Site preparation, foundation works
- Road construction
- Demolition works, highly reinforced concrete
- Trenching
- Tunneling
- Bench leveling
- General construction works



SOOSAN chisel selection

Thanks to strictly selected raw materials and advanced heat treatment system, we provide you with the most suitable and durable chisels for our breakers to be used on various applications such as trenching, demolition, road construction, quarrying, mining and etc.

	Chisel type	Application
Moil point type		Standard chisel for multi-purpose, general use
Universal type		General demolition work : Masonry, concrete, etc
V-Wedge type		Straight cutting work : Trenching, benching, asphalt, concrete, etc.
H-Wedge type		Cross cutting work : Trenching, asphalt, concrete, etc
Flat type		Impact breaking : Primary and secondary rock breaking, etc

SOOSAN Global Network



SOOSAN Korea Head office

Hwaseong Factory

260, Jeongmunsongsan-Ro, Yanggam-Myeon, Hwaseong-Si, Gyeonggi-Do, Korea
TEL +82 31 350 5171 FAX +82 31 624 4516 EMAIL info2@soosan.co.kr

Asan Factory

365, Woelam-Ro, Eumbong-Myeon, Asan-Si, ChungNam, Korea
TEL +82 41 539 0200 FAX +82 41 547 0020 EMAIL export@soosan.co.kr

SOOSAN USA, Inc.

1390 Gateway Drive, Unit 5 Elgin, IL 60124, USA
TEL +847 744 5982 FAX +847 890 6728 EMAIL info@soosanmachinery.com
<http://www.soosanmachinery.com>

SOOSAN Europe

Ohmweg 18, 3208 KE, Spijkenisse, The Netherlands
TEL +31 181 697 640 FAX +31 181 641 038 EMAIL info@soosan.nl

SOOSAN Middle East

P.O. BOX : 262280, LOB14-313 Jebel Ali Free Zone, Dubai, UAE
TEL +971 4 881 0502 FAX +971 4 881 0503 EMAIL kimht@soosan.co.kr

SOOSAN VINA MOTOR CO., LTD

Hap Linh Industrial clusters, Hap Linh Ward, Bac Ninh City,
Bac Ninh Province, Vietnam
TEL +84 02223.720.364/5/6/7 EMAIL ssvm_info@soosan.co.kr
www.soosanvina.com

Distributed by



AIRINDO SAKTI

www.airindosakti.co.id

SOOSAN
CEBOTICS

www.soosancebotics.com

Copyright SOOSAN. SOOSAN reserves the right to alter specifications without prior notice



Printed in Korea
English Ver. 2025.5