

/ BROKK 500⁺



Part of Brokk's SmartPower+ generation, the Brokk 500⁺ not only showcases a remarkable increase in demolition power, but it also establishes a groundbreaking industry standard for power-to-size ratio within its range. Powered by an ingenious 41 kW electrical system, the new Brokk 500⁺ boasts a robust design and outstanding reach, dominating within the industry. Cutting-edge technology now enables a sophisticated two-way communication between the operator and the robot, while customized features enhance the operating experience. When it comes to power, more is undeniably more, and the Brokk 500⁺ is the true embodiment of unmatched demolition power.

- Increase in uptime and more power over time
- Smart sensors and two-way communication system
- Tilted joysticks and ergonomic control box weighing less than 3kg
- Easy-to-reach features and faster dual charging
- Boasts an impressive working reach and radius
- Powered by a 41 kW Brokk SmartPower+ electrical system



Hydraulic breaker in images: BHB 705. Concrete crusher in image: CC700.
Load and stability diagram available on request

TECHNICAL DATA

Slewing speed	16 sec/360°
Transport speed, max.	1.8 km/h; 1.1 mph
Climbing inclination, max.	30°
Hydraulic system capacity	145 l; 38 US gal
Pump type	Variable load-sensing
System pressure	18 MPa; 2611 psi
Increased pressure to attachment	24 MPa; 3481 psi
Pump flow 50 Hz	115 l/min; 30 US gal/min
60 Hz	130 l/min; 34 US gal/min
Power technology	SmartPower+
Electric motor type	ABB
Power*	41 kW
Recommended fuse size*	63 A
Starting device	Soft start/Direct start
Control unit	Portable
Signal code	Digital
Transfer	Professional radio/Cable
Range, radio	Up to 300 m
Machine weight**	5200 kg; 11,464 lbs
Recommended attachment weight	700 kg; 1543 lbs
Sound power level L_{WA}***	100 dB(A)

*Valid for 400 V/50 Hz and 440 V/60 Hz

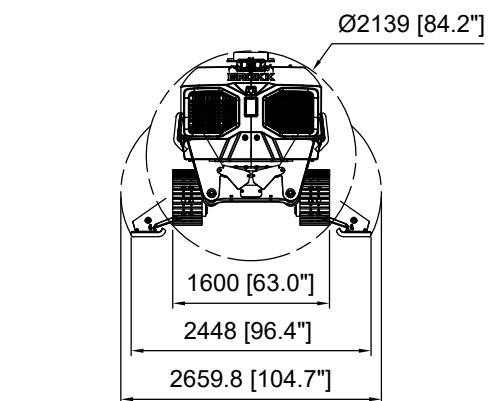
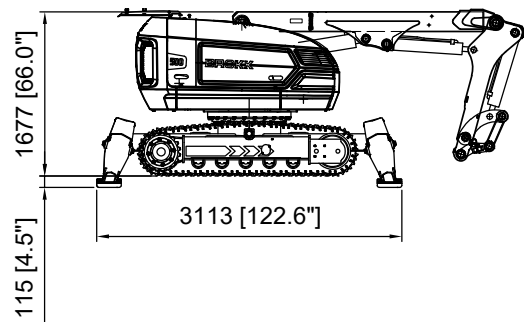
**Excluding options and attachment

***Measured according to directive 2000/14/EC, excl. attachment

OPTIONS

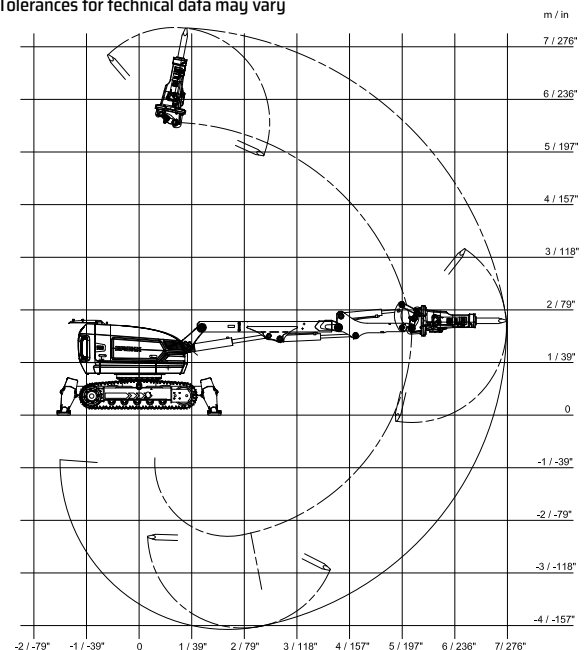
Extra cylinder protection
Heavy duty dipper arm
Rubber caterpillar tracks
Steel caterpillar tracks
Heat resistant hoses
Forced draft cooling for machine
Forced draft cooling for breaker
Steel pads
Atomized water mist
Air flushing for breaker
Water spray for breaker
Extra hydraulic function
Drainage hose
CAN cable connection
Counterweight
Cable reel
Lifting eyes (regular lifting points are standard)
Motion warning

SIZE



RANGE

Tolerances for technical data may vary



DISTRIBUTED BY:



AIRINDO SAKTI

www.airindosakti.co.id