

/ BROKK 300⁺



Brokk's SmartPower+ electrical system enhances the already impressive track record of the Brokk 300, standing as a testament to the rapid evolution of Brokk demolition robots while responding adeptly to the demands of the industry. The Brokk 300⁺ represents a noteworthy leap forward in both power and intelligence. Boasting remarkable hitting power and an enhanced load-bearing capacity for heavier attachments, the new generation Brokk 300⁺ offers unparalleled strength, impressive reach, and unwavering reliability. Renowned for its exceptional power and performance, the Brokk 300⁺ truly is in a league of its own!

- Increase in uptime and more power over time
- Smart sensors and two-way communication system
- Tilted joysticks and ergonomic control box weighing less than 3kg
- Impressive 6-meter reach
- Driven by a robust 37 kW Brokk SmartPower+ electrical system
- Capable of handling heavier and more powerful attachments



Hydraulic breaker in images: BHB 455
Load and stability diagram available on request

TECHNICAL DATA

Slewing speed	16 sec/360°
Transport speed, max.	2.7 km/h; 1.7 mph
Climbing inclination, max.	30°
Hydraulic system capacity	95 l; 25 US gal
Pump type	Variable load-sensing
System pressure	17 MPa; 2466 psi
Increased pressure to attachment	23 MPa; 3336 psi
Pump flow 50 Hz	100 l/min; 26 US gal/min
60 Hz	120 l/min; 32 US gal/min
Power technology	SmartPower+
Electric motor type	ABB
Power*	37 kW
Recommended fuse size*	63 A
Starting device	Soft start/Direct start
Control unit	Portable
Signal code	Digital
Transfer	Professional radio/Cable
Range, radio	Up to 300 m
Machine weight**	3650 kg; 8047 lbs
Recommended attachment weight	500 kg; 1102 lbs
Sound power level L_{WA}***	95 dB(A)

*Valid for 400 V/50 Hz and 440 V/60 Hz

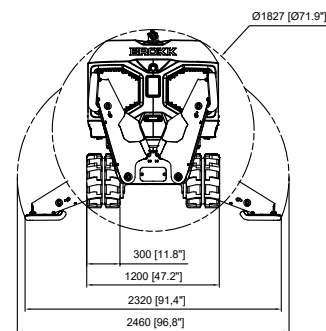
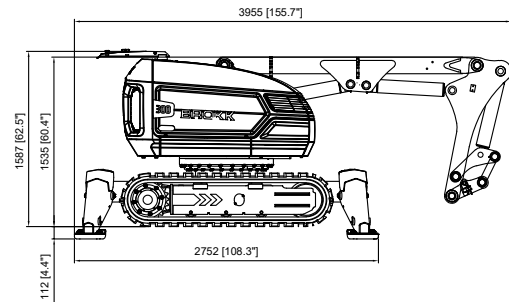
**Excluding options and attachment

***Measured according to directive 2000/14/EC, excl. attachment

OPTIONS

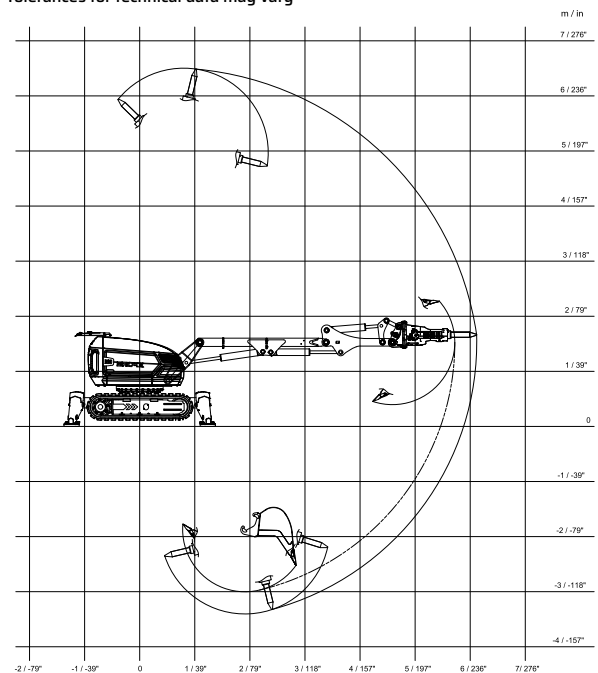
Extra cylinder protection
Rubber caterpillar tracks
Steel caterpillar tracks
Heat resistant hoses
Forced draft cooling for machine
Forced draft cooling for breaker
Steel pads
Atomized water mist
Air flushing for breaker
Water spray for breaker
Extra hydraulic function
Drainage hose
CAN cable connection
Counterweight
Cable reel
Lifting eyes (regular lifting points are standard)
Motion warning

SIZE



RANGE

Tolerances for technical data may vary



DISTRIBUTED BY:



AIRINDO SAKTI

www.airindosakti.co.id