

/ BROKK 170⁺



Meet the new generation Brokk 170⁺, the ultimate demolition robot tailor-made for the construction industry. If you were a fan of the Brokk 170, brace yourselves for an even more enjoyable experience with this newly released model. Despite its unassuming size, this lightweight game-changer packs a punch, boasting a robust breaker and a remarkably powerful (yet nearly silent) concrete crusher. Its compact design allows it to effortlessly navigate through standard doorways, while its innovative SmartPower+ electrical system delivers unparalleled power and proven reliability.

- Increase in uptime and more power over time
- Smart sensors and a sophisticated two-way communication system
- Tilted joysticks and ergonomic control box weighing less than 3kg
- Equipped with a 24 kW Brokk SmartPower+ electrical system
- Operates on a 32 A fuse for efficiency
- Lightweight and powerful



Hydraulic breaker in images: BHB 205
Load and stability diagram available on request

TECHNICAL DATA

Slewing speed	10 sec/360°
Transport speed, max.	2.1 km/h; 1.3 mph
Climbing inclination, max.	30°
Hydraulic system capacity	85 l; 22.5 US gal
Pump type	Variable load-sensing
System pressure	18 MPa; 2611 psi
Increased pressure to attachment	23 MPa; 3336 psi
Pump flow 50 Hz	69 l/min; 18 US gal/min
60 Hz	83 l/min; 22 US gal/min
Power technology	SmartPower+
Electric motor type	ABB
Power*	24 kW
Recommended fuse size*	63 A
Starting device	Soft start/Direct start
Control unit	Portable
Signal code	Digital
Transfer	Professional radio/Cable
Range, radio	Up to 300 m
Machine weight**	1600 kg; 3527 lbs
Recommended attachment weight	270 kg; 595 lbs
Sound power level L_{WA}***	87 dB(A)

*Valid for 400 V/50 Hz and 440 V/60 Hz

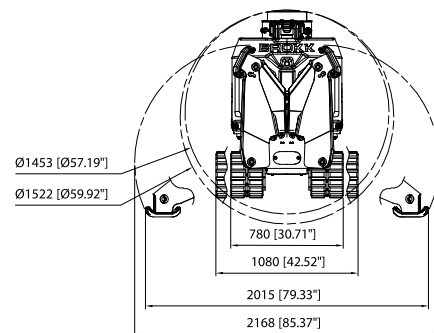
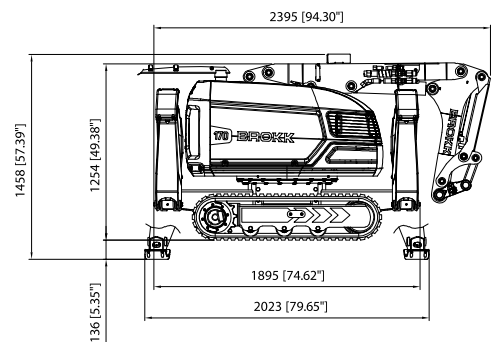
**Excluding options and attachment

***Measured according to directive 2000/14/EC, excl. attachment

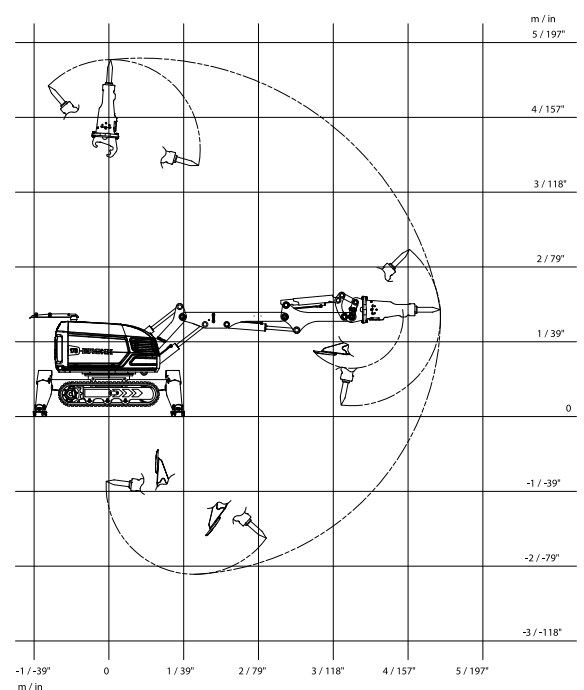
OPTIONS

Extra cylinder protection
Rubber caterpillar tracks
Steel caterpillar tracks
Dozer blades
Heat resistant hoses
Forced draft cooling for machine
Forced draft cooling for breaker
Steel pads
Atomized water mist
Air flushing for breaker
Water spray for breaker
Extra hydraulic function
Drainage hose
CAN cable connection
Lifting eyes (regular lifting points are standard)
Motion warning

SIZE



RANGE



Tolerances for technical data may vary

DISTRIBUTED BY: