

# / BROKK 900 ROTOBOOM

Brokk 900 Rotoboom is the heaviest robot Brokk offers and with a reach at an incredible 10 meters it takes processing applications to a new level. With reliable SmartPower™ and 360-degree arm rotation this robot holds unbeatable capacity for heavy and demanding demolition and maintenance work in the metal processing industry. Equipped with Brokks unique heat and impact-protected process breaker it is perfect for working with hot ladles, converters, runners, and furnaces. In addition, the maneuvering has been improved to enable precision work in a completely new way.

- Specifically designed for tough metal processing applications
- Rotating arm system provide optimal flexibility
- Patented heat-shielded process breaker
- Diesel or electric powered



Hydraulic breaker in images: heat protected BHB 455  
Load and stability diagram available on request



## TECHNICAL DATA

<b>Slewing speed</b>	16 sec/360°
<b>Transport speed, max.</b>	2.8 km/h; 1.7 mph
<b>Climbing inclination, max.</b>	30°
<b>Hydraulic system capacity</b>	230 l; 60.8 US gal
<b>Pump type</b>	Variable load-sensing
<b>System pressure</b>	18.5 MPa; 2683 psi
<b>Increased pressure to attachment</b>	25 MPa; 3626 psi
<b>Pump flow</b>	<b>Diesel/50 Hz el. motor</b> 148 l/min; 39 US gal/min
	<b>60 Hz el. motor</b> 178 l/min; 47 US gal/min
<b>Power technology</b>	SmartPower™
<b>Electric motor type</b>	ABB
<b>Power*</b>	71 kW
<b>Recommended fuse size*</b>	125 A
<b>Starting device</b>	Soft start
<b>Diesel performance - Type 1)</b>	Kohler Four-cylinder, water-cooled, 4-stroke engine
<b>Engine</b>	55,5 kW; 74 hp diesel EPA Tier 4, EU Stage V
<b>Engine oil volume</b>	15.6 l; 4.1 US gal
<b>Diesel performance - Type 2)</b>	Kubota Four-cylinder, water-cooled, 4-stroke engine
<b>Engine**</b>	55,5 kW; 74 hp diesel EPA Tier 3, EU Stage IIIA
<b>Engine oil volume</b>	13.2 l; 3.5 US gal
<b>Fuel tank capacity</b>	80 l; 21.1 US gal
<b>Freezing point</b>	-40 °C; -40°F
<b>Control type</b>	SmartRemote™, portable
<b>Signal code</b>	Digital
<b>Transfer</b>	Professional radio/Cable
<b>Range, radio</b>	Up to 300 m
<b>Machine weight***</b>	11,600 kg; 25,574 lbs
<b>Recommended attachment weight</b>	600 kg; 1323 lbs
<b>Sound power level L<sub>WA</sub>**** El:</b>	99 dB(A)

\*Valid for 400 V/50 Hz and 440 V/60 Hz

\*\*Rated power 74 kW: 99.2 hp at 2600 rpm (SAE J1995)

\*\*\*Excluding options and attachment

\*\*\*\*Measured according to directive 2000/14/EC, excl. attachment

## OPTIONS

Extra cylinder protection

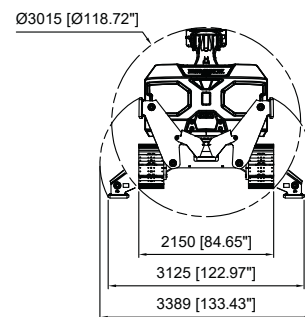
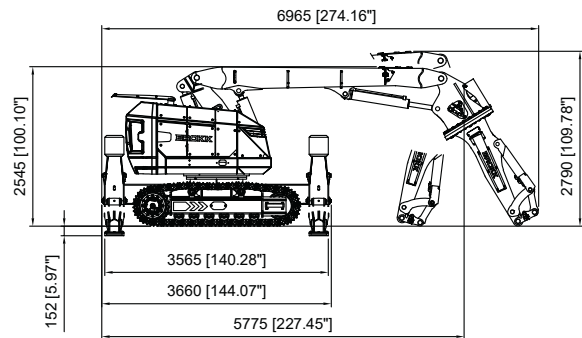
Forced draft cooling for machine

Forced draft cooling for breaker

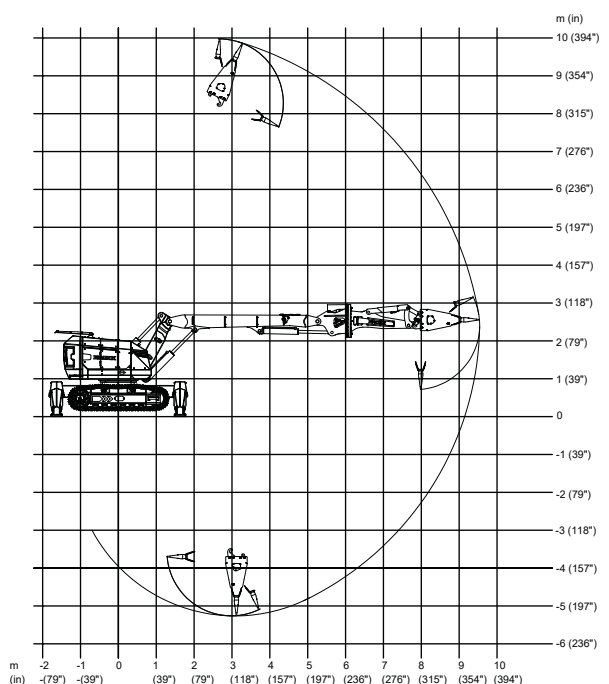
Lifting eyes (regular lifting points are standard)

Motion warning

## SIZE



## RANGE



Tolerances for technical data may vary



**AIRINDO SAKTI**

www.airindosakti.co.id