

Hyundai 9 Series diesel forklift

250D-9



Some of the photos may include optional equipment



AIRINDO SAKTI
www.airindosakti.co.id



HD HYUNDAI
XITESOLUTION




Your satisfaction is our priority.

Proven technology! **Hyundai 9 Series diesel forklift**

The Hyundai 9 Series big diesel forklift is ready for the customers.

The big diesel forklift brings customer added value to the next level by dramatically improving fuel efficiency and enhancing powertrain durability.

A yellow Hyundai 250D-9 forklift is parked on a paved surface in a container yard. The forklift is yellow with a black cab and mast. The mast has "HYUNDAI" and "250D-9" written on it. The front of the forklift has "HYUNDAI" written on it. The background shows several stacked shipping containers in various colors (brown, blue, white) and a clear sky.

Excellent performance

- Eco-friendly, powerful, 204kW Cummins QSL9 engine
- Fully automatic ZF electronic transmission with 3 forward-reverse shifts
- Wet disc brake & Kessler drive axle with planetary final reduction gears
- 3-stage TS mast (STD)

Ensured safety at the logistics site

- Auto parking brake
- Real-time notification of rear wheel steering angle
- Operator presence sensing system (OPSS)

Comfortable and safe driving

- Deluxe cabin equipped with fully automatic air conditioning
- Hydraulic pilot valve lever
- Load weight indicator
- Password starting system

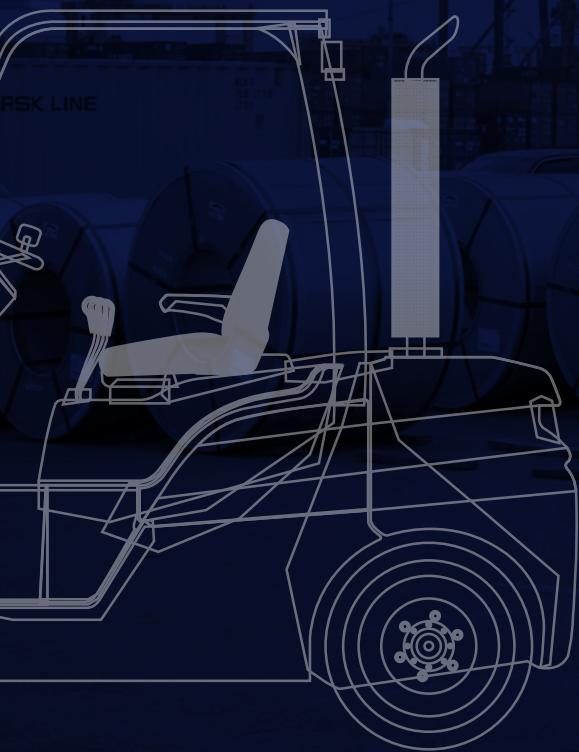
Convenient after-sales management

- One-touch electric motor-driven tilting cabin
- Notification of replacement of the consumable items
- Engine fault diagnosis

Power & Performance

High Efficiency, Optimal Performance

Robust, refined, and luxurious design – 250D-9!
Offering increased power and fuel economy,
this model will be your best partner in
any work environment.



POWERFUL ENGINE

HIGH PERFORMANCE

Some of the photos may include optional equipment

Powerful and economical Cummins QSL9 Engine

The six-cylinder QSL9 engine, equipped with the German Bosch's Common Rail fuel system proven for its reliability and durability, shows lower vibration compared to other engines, delivers excellent cold-start performance, and does not emit white smoke in the winter. Moreover, its combination with the ZF transmission, optimized in fuel injection control and improved in driving efficiency, further enhances fuel efficiency and performance. In particular, you can experience increased power during operations due to its high torque at low and medium speeds, and DOC and SCR emission aftertreatment systems have been applied to satisfy Tier 4 final(Euro stage IV) (requires urea solution).



•204kW/2,200rpm •124kgf.m/1,500rpm

Gradeability and travel speed

With the best engine power, it delivers outstanding running performance and exceptional gradeability, ensuring stable operation at high speeds, on rough terrains and slopes.



31.3% (17.4°)

Max. Gradeability (Loaded)



30.2km/h

Max. Travel Speed (Unloaded)



ZF Full-automatic transmission

Due to optimized engine and performance of the transmission, acceleration performance in low-speed sections has improved and noise, heat generation has reduced. Also, it is possible to check the transmission status/failure etc. on the display window of the cluster.

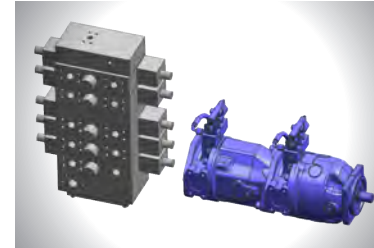


Drive axle & Wet disc brake

Kessler's high capacity drive axle, the planetary gear type, enables outstanding power transmission and shows exceptional adaptability to sudden changes in torque. Also, wet-type multi-plate service brake delivers consistent braking power when operations are repeated.

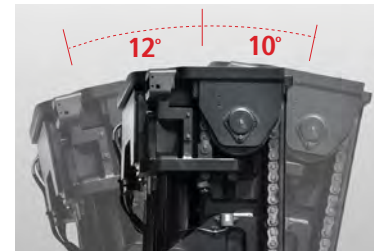
Engine mode control

Engine performance can be adjusted to suit the workload, simply by operating a switch mounted on the side panel.
STD mode : Light load operations (fuel saving mode)
PWR mode : Operations on slope Requiring intense power



Load sensing hydraulic system

Hydraulic system consisting of a Bosch's swash plate piston pump and control valve optimizes energy consumption and increases durability of engine and transmission.

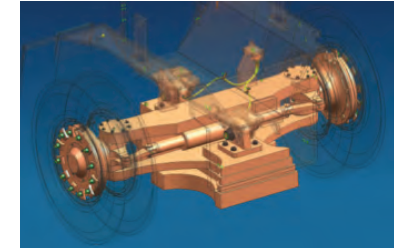


Mast Tilting Angle

Tilting speed is improved by combining some hydraulic pressure generated from the secondary pump to the primary pump flow rate. The tilting angle of 12 degrees forward and 10 degrees backward increases work efficiency.

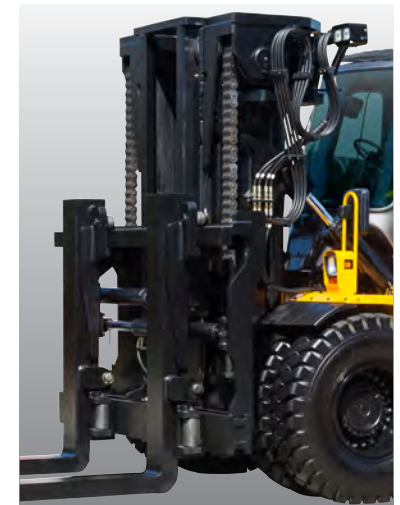
Low engine RPM conversion

Depending on the need, the driver can convert the engine to a low RPM. The RPM will return to its initial settings value once engine is stopped and restarted.



Hydraulic steering axle

The hydraulic steering system always guarantees smooth and flexible steering, preventing over-run and kick-back. Taper roller bearings and ADI knuckles with excellent strength and wear resistance are used in consideration of heavy load operation. The newly added protector prevents damage of rear wheel hub bolts.



3-stage T/S mast for high lifting (OPT)

This model provides 3-stage masts of 6 types with lifting height of 4.7~6.5m, suitable for the indoor working conditions. Also, the removable free lift cylinder (first cylinder) provides wider visibility.

Easy & Comfort

Comfortable Workspace Intuitive Monitoring

Ergonomically designed workspace for operator provides the best comfort in any type of operation.

COMFORTABLE WORKSPACE

ADVANCED MONITORING
SYSTEM

250D-9

HYUNDAI

Ergonomic operating space

The ergonomically designed operating space was made for more space, a wider field of view and operator comfort. The smooth lever and pedal operation, adjustable tilting handle, suspension seat and deluxe cabin provide comfortable and efficient operation.



Full air suspension seat (OPT)

Ergonomically designed to support a comfortable posture, the full suspension seat relieves fatigue and enables greater comfort for operation.



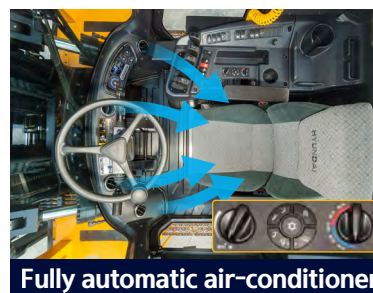
Responsive levers

Responsive levers with the latest hydraulic system enables micromanipulation and excellent performance.
(5-Lever, 6-Function : STD / 7-Function : OPT)



Ergonomic pedals

The high-quality floor mat and ergonomically designed pedal arrangement reduce operator fatigue and drastically improve productivity.



Fully automatic air-conditioner

The air-conditioner automatically adjusts temperature to the set temperature and provides more comfortable working environment for the operator.

New style & centralized cluster

The TFT LCD color monitor indicates real-time driving information and changing vehicle stability depending on the work condition, thus allowing easy and efficient control for the operator. Diagnostic error codes ensure easy trouble-shooting and the operator can select various performance modes.



Main Functions

- Urea level gauge
- T/M information display
- Parking brake indicator
- Battery charging failure warning
- Brake system overheat warning
- Air cleaner filter warning
- Machine inclination warning
- Load weight indicator
- Steering wheel position
- Engine coolant temperature warning
- Engine check warning lamp
- Seatbelt warning
- Exchange consumable indicator
- Mast tilt angle indicator
- High beam indicator
- T/M error warning
- OPSS indicator
- Inching indicator



Integrated communications controller

Cutting-edge communications technology enhances the operator convenience (Bluetooth hands-free, cellphone call, radio communication, USB/MP3 audio control functions).



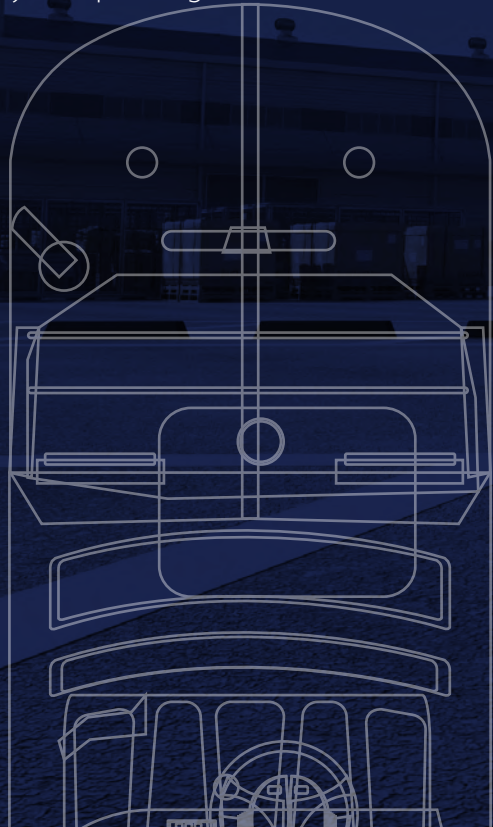
Adjustable steering wheel

The steering wheel can be pushed forward or backward, pushed in or out to suit the driver's body shape, providing an all the more comfortable work environment.

Secure & Safety

Excellent visibility Advanced safety

The safely designed driver's space makes
your operating more comfortable.



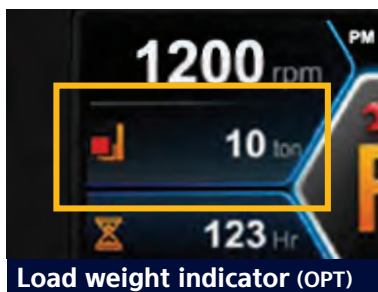
EXCELLENT VISIBILITY

ADVANCED SAFETY

some of the photos may include optional equipment

Excellent visibility for safe operation

Optimized lift cylinder arrangement provides the operator with wider visibility. A panoramic mirror expands the driver's rear view.



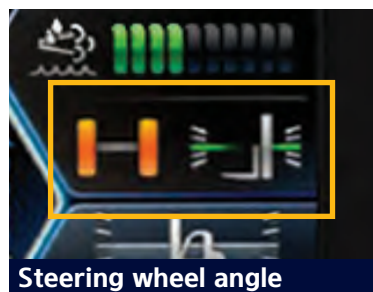
Load weight indicator (OPT)

When lifting a load, a change in hydraulic pressure of the lift line is converted to a measurement of weight displayed in real time, and a warning is given at the time of overload.



Machine inclination warning system

The grade (left) and slope (right) sensors are built into the MCU and provide the grade and slope status information of the vehicle connected with the road surface condition in real time. Also, an alarm is emitted when the KS regulation is exceeded.

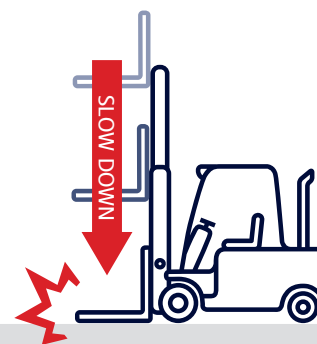


Steering wheel angle

As a measurement of the steering angle sensor, which is installed on the kingpin of the rear axle, is displayed on the large cluster screen as an image, the operator can predict the direction of the vehicle without difficulty.

Safety features

The adoption of a high-sensitivity sensor and advanced safety system eliminates the risk of accidents.



Fork safety features

The down-safety valve prevents forks from dropping down in case of sudden damage of hydraulic line.

Speed limit setting

The operator can set and limit the maximum speed from 10km/h to 30km/h.

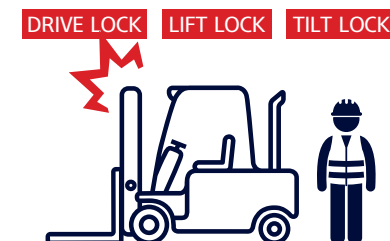
Password starting system

The operator can set a password to prevent vehicle theft and possible safety accidents in case the vehicle is used by an unauthorized person. (Up to 10 passwords can be set.)



Auto parking brake

If the operator leaves the seat while the gear lever is in neutral, the parking brake is automatically engaged to secure safety, and released upon the operator's return to the seat.



Operator presence sensing system

All mast and drive movements stop functioning when the operator is not in the seat.



Increased night work efficiency

Four work lamps on the upper side of the mast, two headlamps on the frame fender, and two work lamps on the upper side of the counterweight enable efficient nighttime and indoor operations.

Maintenance & Convenience

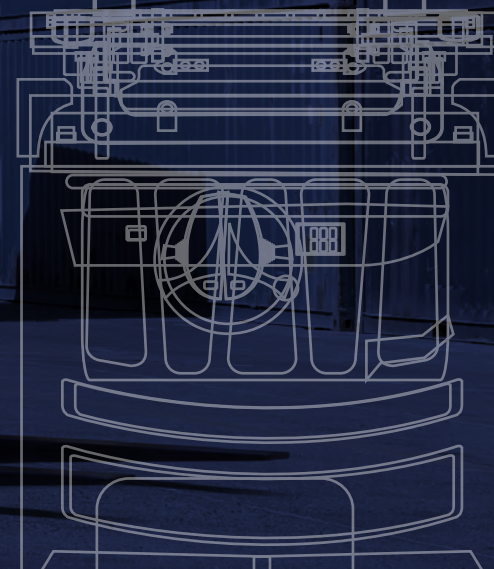
Fast and Easy Maintenance & Convenience Features

An ideal arrangement of components ensures easy access and convenience for maintenance.

EASY MAINTENANCE

BEST CONVENIENCE

250D-9



Fully opening tilting cabin and hood

The tilting cabin that has been dramatically improved in its maintainability functions with a separate electric motor and hydraulic pump. By opening the cabin, which can be tilted to a maximum of 54 degrees, and the engine hood, which can be opened to the left or right, all functional components installed inside the chassis can easily be examined and serviced.



Some of the photos may include optional equipment



Double-filtration air cleaner
The double-filtration air cleaner filter with large capacity enables longer filter life span. The operator can access the air filter easily by simply opening the engine hood.



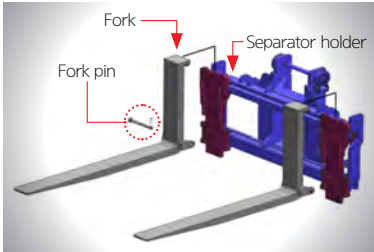
Cabin air cleaner filter
The air cleaner filter blocks external dust and noise from the cabin, and continuously supplies clean air indoor to maintain fresh air in the driving space.



Automatic tilting system
The cabin tilting system allows the operator to tilt the cabin with a single switch up to 54 degrees, thus enabling easy maintenance of functional devices located under the driver seat.



Up-to-date cooling system
Variable speed and remote controlled fans reduce fuel consumption and noise, while the aluminum cooler improves durability and heat output.



Separator holder carriage (OPT)
To improve handling and easily switch forks and other attachment, separator holder system is adopted as option. It is possible to install various attachments easily.



Rear view camera
A rear view camera and monitor are linked to the reverse gear, ensuring safer rear work environment.



Battery master switch
Damage is prevented during inspection/maintenance of electronic units, and battery discharge.



Engine fault diagnosis
Details of engine fault diagnosed by the engine control unit (ECU) can be checked on the cluster.



Maintenance management
Replacement cycle of consumable items can be checked on the monitor, thus preventing performance deterioration of major functional parts due to failure to notice deterioration.

Mast Specifications

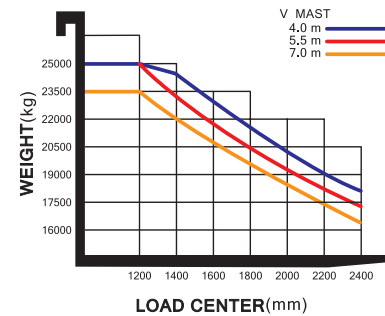
Mast type		Overall Height Lowered	Maximum Fork Height	Free Lift Height	Tilting Angle Fwd / Bwd		Load Capacity (1200mm LC)	Truck Weight Unloaded
		mm	mm	mm	deg		kg	kg
2-STAGE LIMITED FREE LIFT	V345	3,593	3,486	140	12	10	25,000	38,218
	※ V400	3,870	4,040	140	12	10	25,000	38,797
	V450	4,120	4,540	140	12	10	25,000	39,075
	V500	4,370	5,040	140	12	10	25,000	39,367
	V550	4,620	5,540	140	12	10	25,000	39,646
	V600	4,870	6,040	140	12	10	25,000	40,230
	V650	5,120	6,540	140	12	10	24,900	40,543
3-STAGE FULL FREE LIFT	V700	5,370	7,040	140	12	10	24,450	40,832
	TS470	3,400	4,712	746	10	10	25,000	41,187
	TS500	3,500	5,012	796	10	10	24,900	41,355
	TS530	3,600	5,312	846	10	10	24,600	41,585
	TS560	3,700	5,612	896	10	10	24,400	41,756
	TS600	3,835	6,016	963	10	10	24,100	41,988
	TS650	4,000	6,512	1,046	10	10	23,600	42,282

※ : Standard

Specification

Identification	Load capacity	kg	25,000
	Load center	mm	1,200
	Maximum lift height ①	mm	4,040
	Lift speed, loaded/ unloaded	mm/sec	250 / 280
	Lowering speed, loaded/unloaded	mm/sec	400 / 300
	Fork dimension, l×w×h	mm	2,450×250×110
	Fork carriage width ⑭	mm	2,950
	Tilting angle, forward ② / backward ③	degree°	12 / 10
	Extended height ④ / Lowered height ⑤	mm	5,837 / 3,870
	Travel speed, unloaded	km/h	30.2
	Max. Gradeability, loaded	% (°)	31.3 (17.4)
Basic Dimensions	Min. Turning Radius ⑥	mm	5,864
	Max. Drawbar pull, loaded	N	207,448
	Service weight	kg	38,797
	Length to face of forks ⑦ / Overall width ⑧	mm	6,362 / 3,070
	Height of overhead guard (cabin) ⑨	mm	3,311
	Ground clearance ⑩ / Wheel base ⑪	mm	300 / 4,250
	Tread, front ⑫ / rear ⑬	mm	2,212 / 2,140
Engine	Tires, front / rear	-	14.00-24-32PR
	Manufacturer / Model	-	Cummins / QSL9
	Engine power acc. to ISO 1585	kW/rpm	204 / 2,200
	Max. Torque	kgf · m/rpm	124 / 1,500
	Displacement	cc	8,849

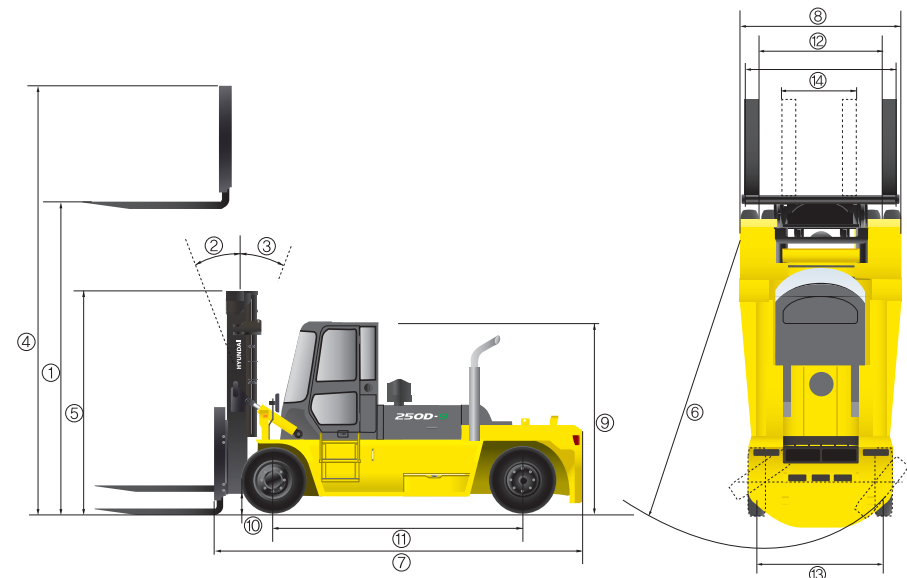
Load Capacity



Optional Items

- Fork(L×W×T)(mm)
2,450×250×110(STD) / 2,700×250×110 / 3,150×250×110 / 3,650×250×110 / 3,700×250×110
- MCV : 6-SPOOL
- Integrated Fork Positioner (Independent) + Side Shift (STD)
- Air Compressor
 - Hands Free
- Separator holder type Fork Carriage
 - Beacon Lamp

Dimension



* Some of the data may change depending on optional equipment.