

## Technical specifications

HiLight

### V7+ CE

Frequency: 50 Hz

Factory: Wux, China



HiLight V7+ for reference

## General description

The innovative light tower incorporates state-of-the-art surface mount device (SMD) LED lighting technology to provide excellent performance and efficiency. Operators at construction sites, events, mines, emergency applications and rental companies will be able to reduce their carbon footprint and operating costs while improving sustainability levels, with 20% more Light coverage than COB LED type.

Combining the use of a low-consumption diesel engine, the new HiLight V7+ light tower offers users maximum efficiency setting to make the most of the energy available.

### TECHNICAL INFORMATION

Reference conditions		
Absolute inlet pressure	bar	1
Relative humidity	%	30
Air inlet temperature	°C	25
Performance data		
Light Coverage (20 lux avg)	m <sup>2</sup>	7.360
Light Coverage (min 1 lux - 75°)	m <sup>2</sup>	12.102
Rated Frequency	Hz	50
Rated voltage	Vac	230
Power output	kW	2,3
Operating temperature (min/max)*	°C	-25 / +50
Altitude capability	m	3500
Relative air humidity maximum	%	85
Maximum sound power level (LWA)**	db(A)	88
Sound pressure level (LpA) at 7 m	db(A)	65
Fuel tank capacity	l	110
Oil service interval	h	600
Mast height	m	7,5
Mast type / rotation		Manual / 340°
Wind speed stability***	km/h	80
Fuel consumption at all floodlights ON	l/h	0,81
Fuel autonomy at all floodlights ON	h	135

\*Option "Cold weather" might be needed.

\*\*Complies with 2000/14/EC

\*\*\*Consult Atlas Copco for conditions reference.

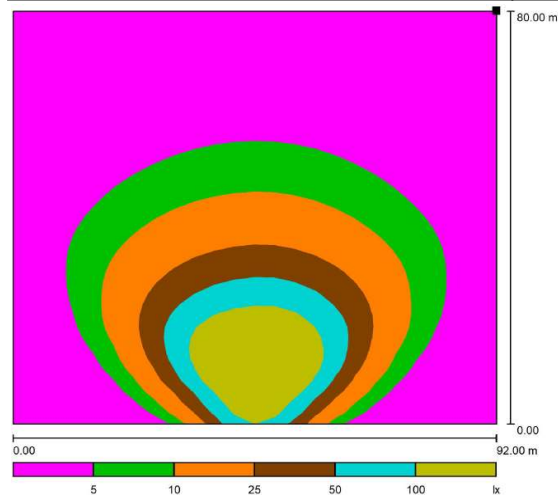
Atlas Copco will keep the rights to change any data when necessary due to any reason.

Machinery safety 2006/42/EC, Electromagnetic compability 2014/30/EU, Low voltage equipment 2014/35/EU, Outdoor noise emission 2000/14/EC, Ecodesign, energy-related products 2009/125/EC, Radio equipment 2014/53/EU, ROHS Directive 2011/65/EU, WEEE Directive 2012/19/EU

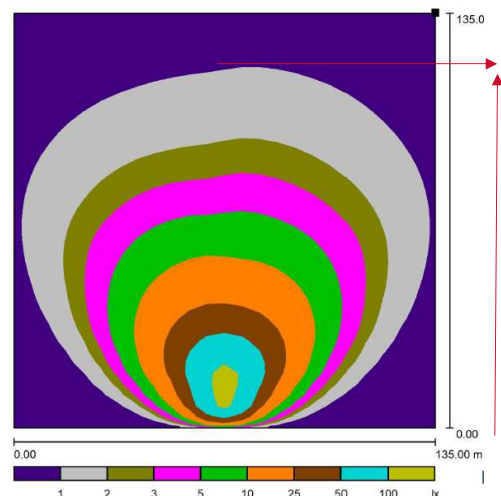
Canopy		
Canopy		HardHat®
Type		Undercarriage
Engine		
Brand and Model		Kubota Z482
Speed	rpm	1500   1800
Rated net output (PRP)	kW	3,4
Coolant system		Coolant
Aspiration / Combustion system		Natural / Direct Injection
Number of cylinders	Cylinder	2
Speed governor		Electronic
Capacity of oil sump	l	2,5
Capacity of cooling system	l	2,8
Electrical system	Vdc	12
Emission stage		Stage V
Alternator		
Brand and Model		ACA132BL
Rated output	kVA	3
Protection degree		IP23
Insulation class		H
Number of wires	Wires	4

## Lamps

Number of lights	Unit	4
Technology		SMD LED
Floodlight power	W	350
Total Lumen	lm	210.000



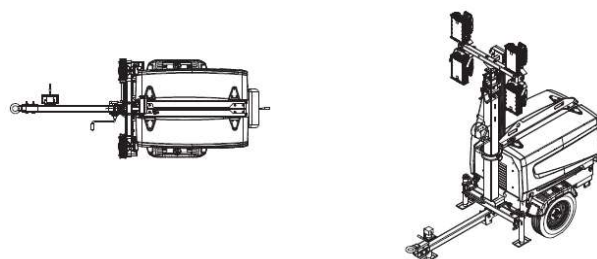
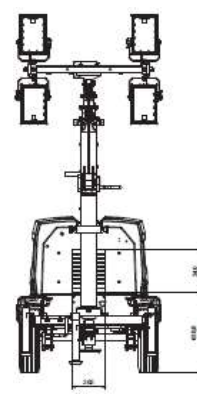
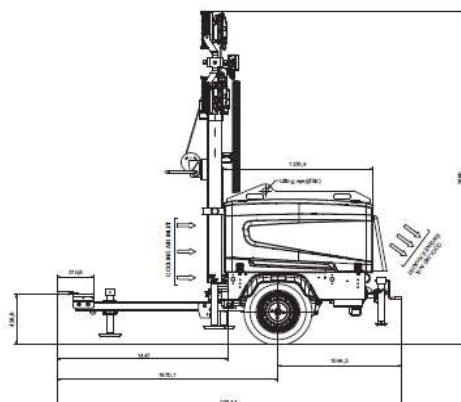
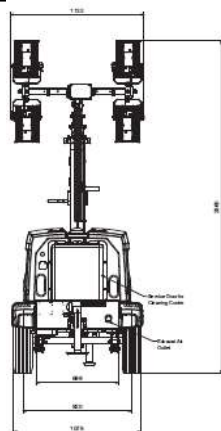
7.360 m<sup>2</sup> avg 20 lux



12.102 m<sup>2</sup> min 1 lux

## Dimension and weight

Length x Width x Height in transport mode	mm	1892 x 1108 x 2941
Length x Width x Height in operation mode	mm	2904 x 2318 x 7516
Weight (dry / wet)	kg	702 / 796



Mechanical Options
Spark Arrestor
Towing hitch combo
Towing hitch ball coupling 2 inch
Towing hitch ring 2.5 inch
Adjustable towing support
Electrical Options
Cubicle ELCB with universal socket 230V 50Hz   240V 60Hz
Cubicle ELCB without socket
Cubicle with universal socket 230V 50Hz   240V 60Hz
Road light system
E-Stop
Earth pin
Battery isolator
DC E-winch
Lc1003™

DISTRIBUTED BY:

